

**Carbon reinforced
seats with superior
temperature and
wear resistance**

MODU 90D

2-pcs flange ball valve PN40/16

- Stainless steel "CF8M"
- Steel "WCB"
- Industrial high end 2-pcs. flange ball valve
- Unique stuffing box ensuring long and reliable service
- Carbon reinforced seats with superior temperature and wear resistance
- Direct mount of actuators
- Food grade materials used throughout the valve
- ISO 14001 certification



Make it better.

MODU[®]

MODU 90D

2-pcs flange ball valve PN40/16 • EU-1935/2004, FDA, Kosher, Halal, ATEX, TA-LUFT, SIL3

Connection / Face to face

Flange according to EN1092-1 PN40..PN16 / (F4/F5)

Usable for

Water, air, steam, oil etc.

Options on request

Dimension: DN250-DN300
 Material: Duplex, hastelloy, titanium etc.
 Seat: PTFE, Delrin, PEEK etc.
 Connection: ANSI150

Pressure rating

DN15-DN50: PN40bar
 DN50-DN200: PN16bar

Temperature

-20° C to 220° C

Accessories

- V-port ball (30°, 60°, 90°), for regulating purposes
- Precision coupling / bracket regulating purposes
- Closed stem extension, TA-Luft approved stuffing box "TSM"
- Closed stem extension, without stuffing box
- Handle with position indication, lockable
- Position indication, handle operated (inductive or mechanic)

Spare parts

- Complete kit/set of gaskets
- Seat rings
- Joint (body) gaskets
- Ball

Developed for your industry



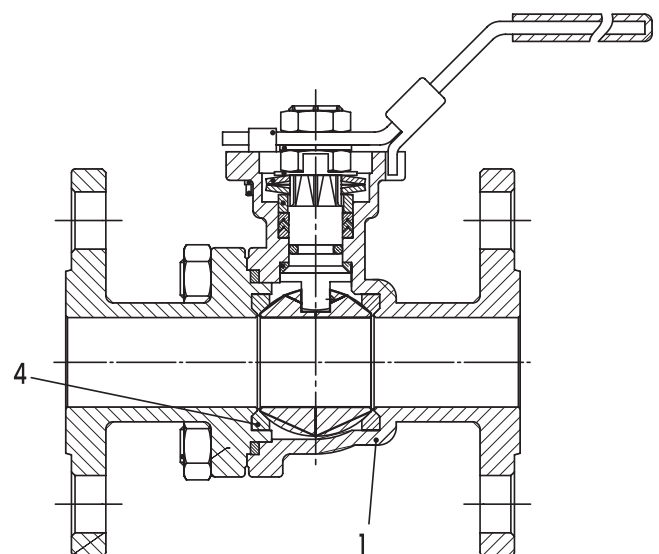
Additional specification can be requested.

Make it better.

MODU Valves A/S • moduvalves.com

Parts description, excerpt

Pos	Description	Material
1	Body	Stainless Steel CF8M or WCB
8	Seat	CTFE (25%C 75%PTFE)



When ordering, please find information in regards to size of valve on the valve nameplate. eg. MODU 90D DN50

➤ Improve the quality

We help Engineers to improve the quality of your manufacturing process.

➤ Optimize total cost

We help Purchasing Officers to optimize total cost of production, prevent downtime and safeguard your brand.

➤ Work smarter

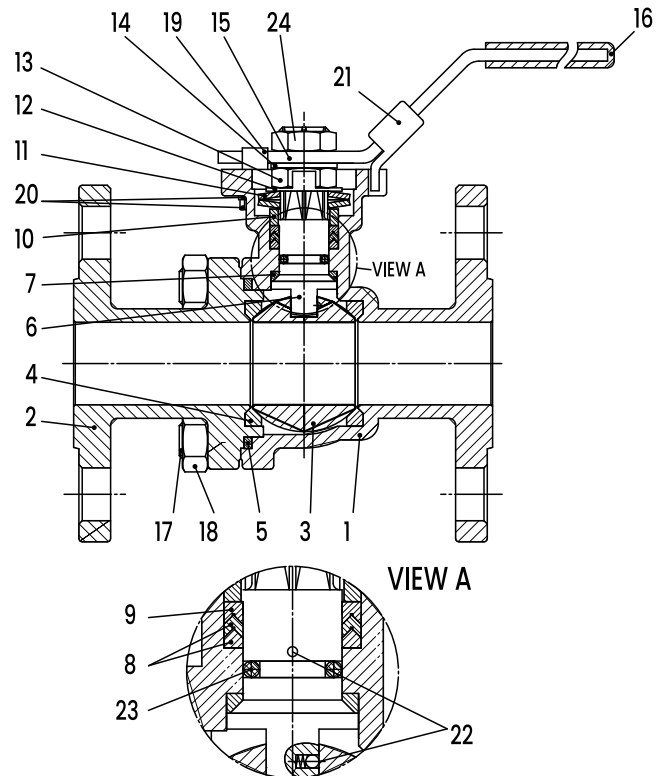
We help Maintenance Crews to work smarter, while preventing time-consuming mistakes.

MODU 90D

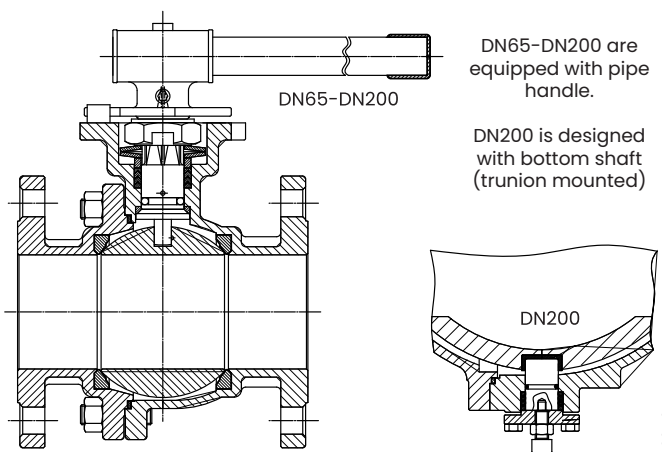
2-pcs flange ball valve PN40/16 • EU-1935/2004, FDA, Kosher, Halal, ATEX, TA-LUFT, SIL3

Materials

Pos	Description	Material
1	Body	Stainless Steel CF8M or WCB
2	Connection	Stainless Steel CF3M or WCB
3	Ball	Stainless Steel CF8M/AISI316
4	Seat	CTFE (25%C 75%PTFE)
5	Joint gasket	PTFE
6	Stem	Stainless Steel AISI316
7	Pyramid segment	CTFE (25%C 75%PTFE)
8	Stem seal V-ring	MG1241 (5%C 20%R 75%PTFE)
9	Stem seal top ring	RTFE (25% Glas 75%PTFE)
10	Gland	Stainless Steel AISI304
11	Belleville washer	Stainless Steel AISI301
12	Lock saddle	Stainless Steel AISI304
13	Nut	Stainless Steel AISI304
14	Washer	Stainless Steel AISI304
15	Handle	Stainless Steel AISI304
16	Sleeve	Vinyl
17	Body bolt	Stainless Steel AISI304
18	Nut	Stainless Steel AISI301
19	Stop bolt	Stainless Steel AISI304
20	Nut / washer	Stainless Steel AISI304
21	Locking plate	Stainless Steel AISI304
22	Antistatic device	Stainless Steel AISI316
23	O-ring	FPM
24	O-ring	Stainless Steel AISI304



DIM	*) Torque [Nm]	Weight [kg]	Kv-value [m³/h] Open
DN15	7,7	2.3	10
DN20	12,3	3.0	27
DN25	15,4	3.9	48
DN32	22,3	5.8	70
DN40	27,7	7.9	102
DN50	33,1	10.2	204
DN65	50,8	14.7	272
DN80	82,4	20.4	493
DN100	94,0	28.0	867
DN125	185,6	53.4	1087
DN150	194,8	69.4	1618
DN200	693,8	103.0	2978



DN65-DN200 are equipped with pipe handle.

DN200 is designed with bottom shaft (trunion mounted)

*) Torques are listed without safety factor at 20°C. See section for actuator sizing in the following pages.

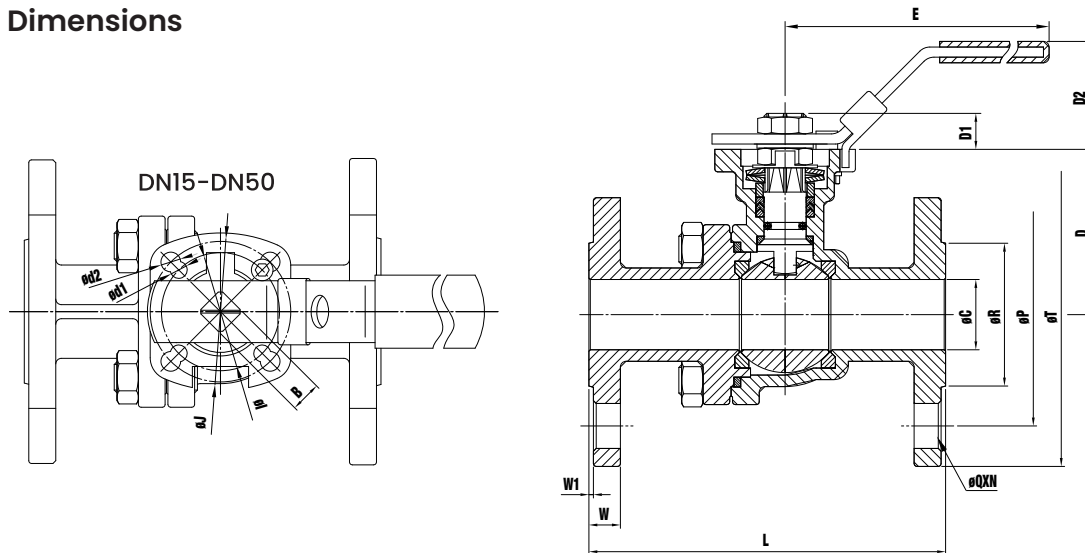
Make it better.

MODU Valves A/S • moduvalves.com

MODU 90D

2-pcs flange ball valve PN40/16 • EU-1935/2004, FDA, Kosher, Halal, ATEX, TA-LUFT, SIL3

Dimensions



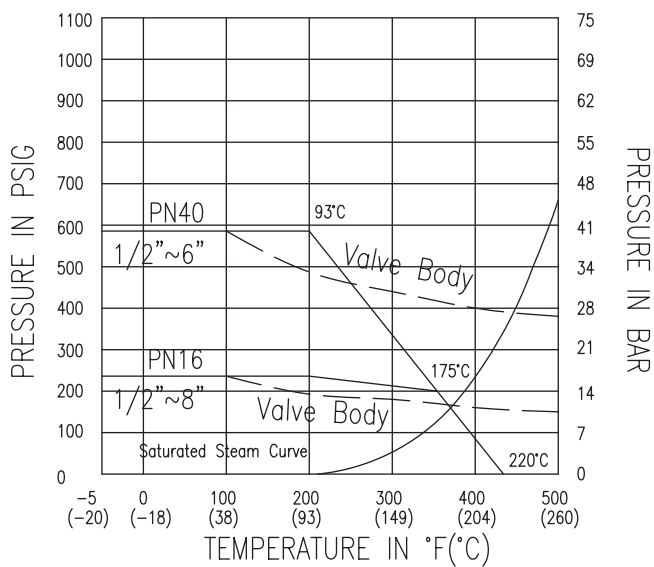
DIM	øC	B	E	D	D1	D2	øI	øJ	L	N	øP	øQ	øR	øT	W	W1	ød1	ød2	ISO5211
DN15	15	11	165	48.7	9.9	36	42	50	115	4	65	14	45	95	16	2	6	7	F04/F05
DN20	20	11	165	53.7	9.9	36	42	50	120	4	75	14	58	105	18	2	6	7	F04/F05
DN25	25	11	165	58.8	10.3	36	42	50	125	4	85	14	68	115	18	2	6	7	F04/F05
DN32	32	14	215	72.6	12.9	49	50	70	130	4	100	18	78	140	18	2	7.5	9	F05/F07
DN40	38	17	263	89.1	19.0	58	70	102	140	4	110	18	88	150	18	3	10	12	F07/F10
DN50	50	17	263	96.6	19.0	58	70	102	150	4	125	18	102	165	20	3	10	12	F07/F10
DN65	65	17	263	116.0	19.0	58	70	102	170	4	145	18	122	185	18	3	10	12	F07/F10
DN80	80	22	365	132.5	23.0	46.2	102	125	180	8	160	18	138	200	20	3	12	14	F10/F12
DN100	100	22	365	157.0	23.0	46.2	102	125	190	8	180	18	158	220	20	3	12	14	F10/F12
DN125	125	27	705	192.7	28.5	66.5	125	140	325	8	210	18	188	250	22	3	14	18	F12/F14
DN150	150	27	705	210.2	28.5	66.5	125	140	350	8	240	22	212	285	22	3	14	18	F12/F14
DN200	200	36	955	265.0	40.0	61.0	140	165	400	8	295	22	268	340	28	3	18	22	F14/F16

MODU 90D

2-pcs flange ball valve PN40/16 • EU-1935/2004, FDA, Kosher, Halal, ATEX, TA-LUFT, SIL3

Temperature vs. pressure table for CTFE seats

Valid for fluids and dry gasses. For steam and similar services, contact MODU Valves A/S.



Actuator sizing

Media factor	Multiply by
Clean, particle free, lubricating (oil, hydraulic fluids etc)	1.00
Clean, particle free, non-lubricating (water, alcohol etc)	1.20
Moist gas or saturated steam	1.20
Dry gas or superheated steam	1.40
Gas, dirty unfiltered i.e. Natural gas	1.50
Particle filled, corrosive, solvents and polluted systems	2.00 #

Service factor	Multiply by
Simple on / off maneuvering	1.00
Regulating / Throttling	1.20
Maneuvering once per week	1.20
Maneuvering every second week or critical component	1.50

For actuator dimensioning:

Torque x Media factor x Service factor

Polluted systems will reduce the expected life span of the seat rings