

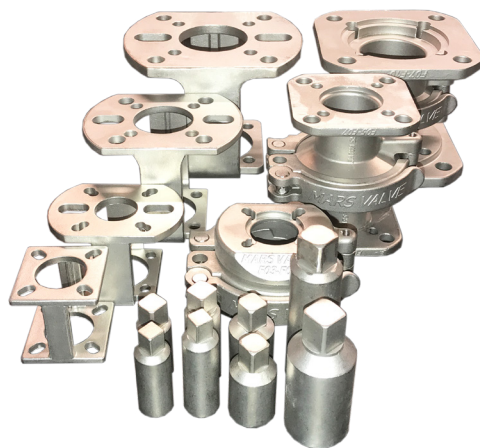


Coupling and bracket

KOB

Coupling/bracket

- Stainless steel CF8M/AISI316
- F03/04, F05/F07, F07/F10
- MODU standard couplings for mounting between valve and actuator, together with standard bracket Bl..B5 or service bracket "MSB-F34 ... F71".



Make it better.

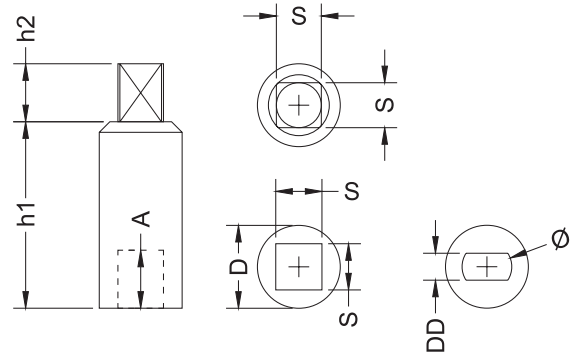
MODU[®]

KOB

Coupling/bracket

Field of application

For mounting the actuator on the valve, either due to the ISO top design or to raise the actuator away from the valve due to insulation or heat.



Bracket	Bracket height [mm]	ISO connection Top / Bottom	Coupling ID	D [mm]	h1 [mm]	h2 [mm]	A [mm]	S x S [mm]	T [mm]	Bottom DDxØ el. SxS [mm]
B1	42	F03-F04 / F03-F04	K01	17	41,5	10	9,0	9 x 9		DD6,5 x Ø9,5
			K01a	17	41,5	12	9,0	11 x 11		DD6,5 x Ø9,5
			K02	17	31,0	12	10,7	9 x 9		DD6,5 x Ø9,5
			K02a	17	31,0	12	10,7	11 x 11		DD6,5 x Ø9,5
B2	47	F04-F05 / F04	K07	14	42,0	12	13,0	9 x 9		9 x 9
			K03	22	33,0	12	11,0	11 x 11		DD8,0 x Ø11,0
B3	70	F05-F07 / F05	K08	20	47,0	12	15,0	11 x 11		11 x 11
			K04	30	52,0	15	13,0	14 x 14		DD9,7 x Ø14,5
B4	87	F07-F10 / F07	K09	25	70,0	15	18,0	14 x 14		14 x 14
			K05	35	65,0	17	25,3	17 x 17		DD12,0 x Ø22,0
B5	87	F07-F10 / F10	K06	38	67,0	20	25,3	17 x 17		DD15,0 x Ø24,0
			K10	30	85,0	20	18,0	17 x 17		17 x 17
MSB-F34	47	F03-F04 / F03-F04	K18*	30	85,0	24	18,0	17 x 17		22 x 22
			K19*	35	85,0	24	26,0	22 x 22		22 x 22
			K11	17	45,0	10	9,0	9 x 9		DD6,5 x Ø9,5
			K12	17	36,9	10	10,0	9 x 9		DD6,5 x Ø9,5
MSB-F57	87	F05-F07 / F05-F07	K03	22	33,0	12	11,0	11 x 11		DD8,0 x Ø11,0
			K14	14	47,0	10	10,0	9 x 9		9 x 9
			K08	20	47,0	12	15,0	11 x 11		11 x 11
			K13	24	70,0	15	13,0	14 x 14		DD9,6 x Ø14,5
MSB-F71	87	F07-F10 / F07-F10	K15	25	87,0	15	18,0	14 x 14		14 x 14
			K10	30	85,0	20	18,0	17 x 17		17 x 17
			K18*	30	85,0	24	18,0	17 x 17		22 x 22
			K19*	35	85,0	24	26,0	22 x 22		22 x 22
B1 MSB-F34	42 47	F03-F04 / F03-F04	K05	35	65,0	17	25,3	17 x 17		DD12,0 x Ø22,0
			K06	38	67,0	20	25,3	17 x 17		DD15,0 x Ø24,0
			K10	30	85,0	20	18,0	17 x 17		17 x 17
			K18*	30	85,0	24	18,0	17 x 17		22 x 22
B3 MSB-F57	70 87	F05-F07 / F05	K19*	35	85,0	24	26,0	22 x 22		22 x 22
			K16**	18	40,0	17	11,0	9 x 9		9 x 9
B3 MSB-F57	70 87	F05-F07 / F05	K17**	25	68,0	34	16,0	14 x 14		14 x 14

* Not stock item **Special couplings (requires grinding/milling for minimum bracket height)

Make it better.

MODU Valves A/S • moduvalves.com

KOB

Coupling/bracket

Selection of coupling and brackets for valves with "DD" stem

Valves with "DD" stem (round stem with two faces) always require coupling and bracket if you want to mount an actuator.

Selection of coupling and brackets for valves with square stem and ISO top for direct actuator assembly

Coupling and bracket are selected on the basis of a desire to raise the actuator away from the valve due to temperature or for insulation purposes. There may also be a desire to use MSB service bracket for fast separation of the valve and actuator.

DIM FB (Full bore)	Valves with DD stem requiring coupling and bracket			Valves with square stem and ISO top for direct actuator assembly					
	MODU 55	MODU 83	MODU 22	MODU 33	MODU 39M	MODU 77	MODU 88	MODU 90D	
DN08 (1/4")	-	B1/K01/K01a or MSB-F34/K11	B1/K07 or MSB-F34/K14	B1/K07 or MSB-F34/K14	B1/K07 or MSB-F34/K14	B1/K07 or MSB-F34/K14	B1/K07 or MSB-F34/K14	-	
DN10 (3/8")	-	B1/K01/K01a or MSB-F34/K11	B1/K07 or MSB-F34/K14	B1/K07 or MSB-F34/K14	B1/K07 or MSB-F34/K14	B1/K07 or MSB-F34/K14	B1/K07 or MSB-F34/K14	-	
DN15 (1/2")	B1/K02/K02a or MSB-F34/K12	B1/K02/K02a or MSB-F34/K12	B1/K07 or MSB-F34/K14	B1/K07 or MSB-F34/K14	B1/K07 or MSB-F34/K14	B1/K07 or MSB-F34/K14	B1/K07 or MSB-F34/K14	B2/K08 or MSB-F34/K08	
DN20 (3/4")	B1/K02/K02a or MSB-F34/K12	B1/K02/K02a or MSB-F34/K12	B1/K07 or MSB-F34/K14	B1/K07 or MSB-F34/K14	B1/K07 or MSB-F34/K14	B1/K07 or MSB-F34/K14	B1/K07 or MSB-F34/K14	B2/K08 or MSB-F34/K08	
DN25 (1")	B2/K03 or MSB-F34/K03	B2/K03 or MSB-F34/K03	B2/K08 or MSB-F34/K08	B2/K08 or MSB-F34/K08	B2/K08 or MSB-F34/K08	B2/K08 or MSB-F34/K08	B2/K08 or MSB-F34/K08	B2/K08 or MSB-F34/K08	
DN32 (1-1/4")	B2/K03 or MSB-F34/K03	B2/K03 or MSB-F34/K03	B2/K08 or MSB-F34/K08	B2/K08 or MSB-F34/K08	B2/K08 or MSB-F34/K08	B2/K08 or MSB-F34/K08	B2/K08 or MSB-F34/K08	B3/K09 or MSB-F57/K15	
DN40 (1-1/2")	B3/K04 or MSB-F57/K13	B3/K04 or MSB-F57/K13	B3/K09 or MSB-F57/K15	B3/K09 or MSB-F57/K15	B3/K09 or MSB-F57/K15	B3/K09 or MSB-F57/K15	B3/K09 or MSB-F57/K15	B4/K10 or MSB-F57/K10	
DN50 (2")	B3/K04 or MSB-F57/K13	B3/K04 or MSB-F57/K13	B3/K09 or MSB-F57/K15	B3/K09 or MSB-F57/K15	B3/K09 or MSB-F57/K15	B3/K09 or MSB-F57/K15	B3/K09 or MSB-F57/K15	B4/K10 or MSB-F57/K10	
DN65 (2-1/2")	B4/K05 or MSB-F71/K05	-	-	B4/K10 or MSB-F57/K10	-	B4/K10 or MSB-F57/K10	B4/K10 or MSB-F57/K10	B4/K10 or MSB-F57/K10	
DN80 (3")	B5/K05 or MSB-F71/K05	-	-	B5/K19 or MSB-F71/K19	-	B4/K10 or MSB-F57/K10	B4/K10 or MSB-F57/K10	B5/K19 or MSB-F71/K19	
DN100 (4")	B5/K06 or MSB-F71/K06	-	-	B5/K19 or MSB-F71/K19	-	B4/K10 or MSB-F57/K10	B4/K10 or MSB-F57/K10	B5/K19 or MSB-F71/K19	
DN125 (5")	-	-	-	-	-	-	-	B6/K20*	
DN150 (5")	-	-	-	-	-	-	-	B6/K20*	
DN200 (8")	-	-	-	-	-	-	-	B6/K21*	

* Not stock item

B6 (Bracket height 87mm F12/F14)
K20 (Coupling 27x27mm for B6)
K21 (Coupling 36x36mm for B6)

Make it better.

MODU Valves A/S • moduvalves.com