



**Sustainable
concept**

MODU 83

3-Piece Ball Valve

- Spare midsection for MODU 83 3-piece ball valve
- 1.4408 - Stainless steel or WCB-steel
- Closed pin bolts for easy cleaning
- Unique patented packing system ensuring long-lasting and trouble-free operation
- Carbon-reinforced seat rings for enhanced temperature and wear resistance
- The ball valve is approved for food contact (FKM) with full traceability on all media-contacted parts, including seat rings, O-rings, and food-grade grease
- ISO 14001 certified



Make it better.

MODU®

MODU 83

3-Piece Ball Valve - Sustainable Concept • EU1935/2004, FDA, ATEX, TA-LUFT, SIL3

Pressure steps

DN08FB-25FB	125 bar / 2000 psi
DN32FB - 50FB	100bar / 1500 psi

Temperature

-40°C to 250°C

Installation of seat rings

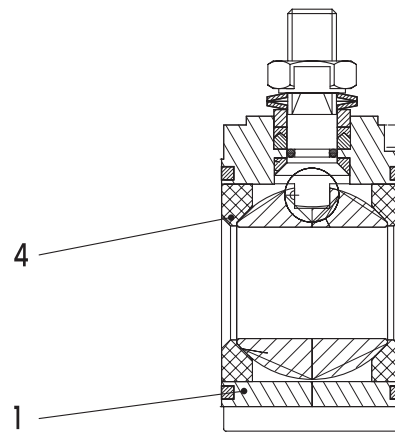
For optimal food safety, the seat rings come with traceability and individual material certificates. MODU's original seat rings are marked with a tracking number and directional arrow for proper installation.

Arrow towards the ball Δ



Material description, excerpt

Pos	Description	Material
1	Valve body	Nickel-plated brass 1.4408 el. WCB
4	Seat rings	CTFE (25%C 75%PTFE)



Developed for your industry



Additional specifications are available upon request.

Make it better.

MODU Valves A/S • moduvalves.com

➤ Increase quality.

We assist engineers in improving the quality of your manufacturing process.

➤ Optimize Your Investment.

We help procurement teams optimize overall production costs, increase uptime, and protect your brand.

➤ Work smarter.

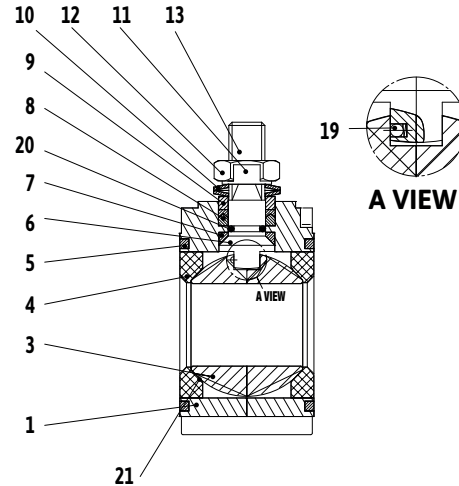
We support service teams in working smarter while preventing time-consuming errors.

MODU 83

3-Piece Ball Valve - Sustainable Concept • EU1935/2004, FDA, ATEX, TA-LUFT, SIL3

Material description

Pos *	Description.....	Material
1	SE Body.....	Stainless steel 1.4408 el.
WCB		
3	SE Ball	Stainless steel 1.4408/AISI316
4	SEF Seat rings.....	CTFE (25%C 75%PTFE)
5	EF House packing	PTFE / TFM1600
6	SEM Spindle	Stainless steel AISI316
7	EF Pyramidal disc	CTFE (25%C 75%PTFE)
8	EF Stem V-rings.....	MG1241 (5%C 20%R 75%PTFE)
9	Pressure bushing...	Stainless steel AISI304
10	Disc springs.....	Stainless steel AISI301
11	Retaining disc	Stainless steel AISI304
12	M Stem nut	Stainless steel AISI304
19	E Antistatic protection.....	Stainless steel AISI316
20	EF O-ring.....	FKM - V7502AA EU-1935
21	EF Grease.....	NLGI 2 Food-Approved



*Documentation 1-1 certificate for each valve

Each individual ball valve is serial numbered and covered by the MODU production log. This log details the tightening torque of each individual body bolt and stem nut. The ball valve's torque is measured for final verification of tolerance quality, which is crucial for consistent and accurate actuator sizing. The production log can be viewed by scanning the valve's QR code and entering the valve's serial number.

[S] 100% traceability - ProLog Components are covered by a heat number certificate and full traceability. The component will have a heat number marked on the surface or be described under the serial number in the production log. 3.1 material certificate for steel parts.

[E] The materials comply with food contact regulations:
 EU-regulation no. 1935/2004
 EU-regulation no. 10/2011
 EU-regulation no. 2023/2006

[F] FDA 21 CFR

[M] Digital recording of tightening torques, which are stored in the ball valve's production log, along with torque measurements.

DIM		Torque [Nm]			Weight [kg] FB	Kv-value [m3/t] open	Torque for body bolts	
		FB 10% Max bar	FB 50% Max bar	FB 100% Max bar			Please cross-tighten the bolts with a torque wrench as shown in Fig. 1	
DN08	1/4"	6,2	6,2	6,9	0,32	6,9	DN08	10 [Nm]
DN10	3/8"	6,2	6,2	6,9	0,30	6,9	DN10	10 [Nm]
DN15	1/2"	6,9	6,9	10	0,34	12,7	DN15	11 [Nm]
DN20	3/4"	9,2	9,2	13,8	0,60	29,2	DN20	14 [Nm]
DN25	1"	12,3	12,3	18,5	0,90	48,2	DN25	19 [Nm]
DN32	1 1/4"	20,0	20,0	33,8	1,27	73,1	DN32	22 [Nm]
DN40	1 1/2"	26,2	26,2	46,9	2,01	107,5	DN40	37 [Nm]
DN50	2"	26,9	32,3	59,2	2,99	215,0	DN50	44 [Nm]

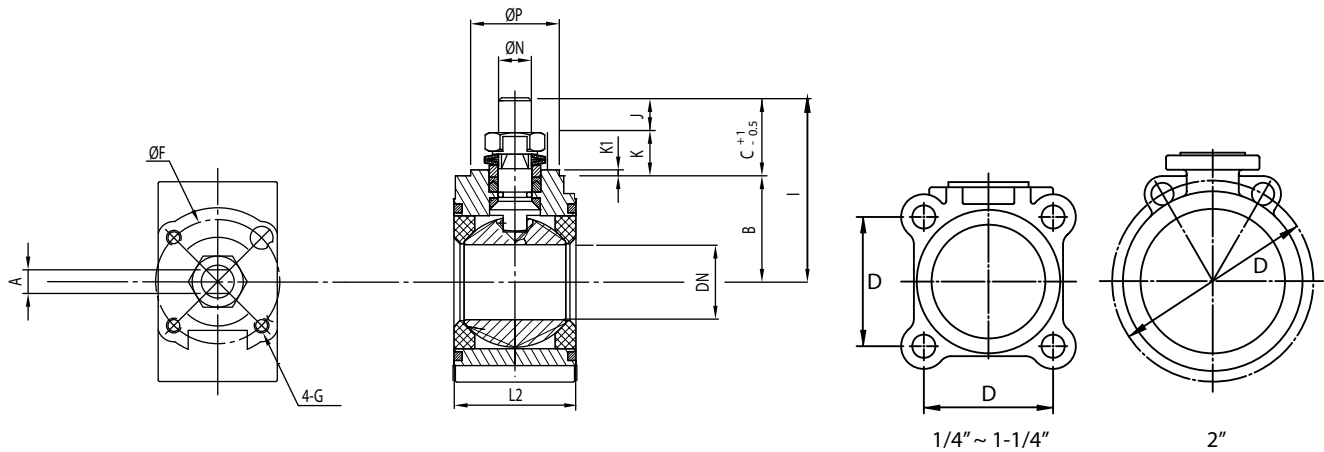
Make it better.

MODU Valves A/S • moduvalves.com

MODU 83

3-Piece Ball Valve - Sustainable Concept • EU1935/2004, FDA, ATEX, TA-LUFT, SIL3

Dimensions of MODU 83 Center Section



DIM	DN	A	B	C	E	$\varnothing F$	G	I	J	K	K1	L2	$\varnothing P$	$\varnothing N$	ISO5211	D
1/4"	08	6.5	29.8	7.4	134	36	M5	37.2	6.1	1.3	0.5	20,5	25	9.5	F03	32,0
3/8"	10	6.5	29.8	7.4	134	36	M5	37.2	6.1	1.3	0.5	20,5	25	9.5	F03	32,0
1/2"	15	6.5	29.0	16.1	134	36	M5	45.1	7.3	8.8	2.0	24,5	25	9.5	F03	38,2
3/4"	20	6.5	33.0	18.1	134	36	M5	51.1	8.8	9.3	2.0	31,4	25	9.5	F03	44,3
1"	25	8.0	36.0	24.6	170	42	M5	60.6	11	13.6	2.0	41,3	30	11.1	F04	50,0
1-1/4"	32	8.0	40.0	24.3	170	42	M5	64.3	9.7	14.6	2.0	48,4	30	11.1	F04	57,2
1-1/2"	38	9.7	47.3	30.2	207	50	M6	77.5	12.2	18.0	2.2	56,3	35	14.3	F05	66,6
2"	50	9.7	69.5	26	207	50	M6	95.5	12.6	13.4	1.5	71,4	35	14.3	F05	112,0

MODU 83

3-Piece Ball Valve - Sustainable Concept • EU1935/2004, FDA, ATEX, TA-LUFT, SIL3

Temperature vs. Pressure Illustration for CTFE Seat Rings

Applicable to liquids and dry gases. For steam media, please contact MODU Valves A/S.

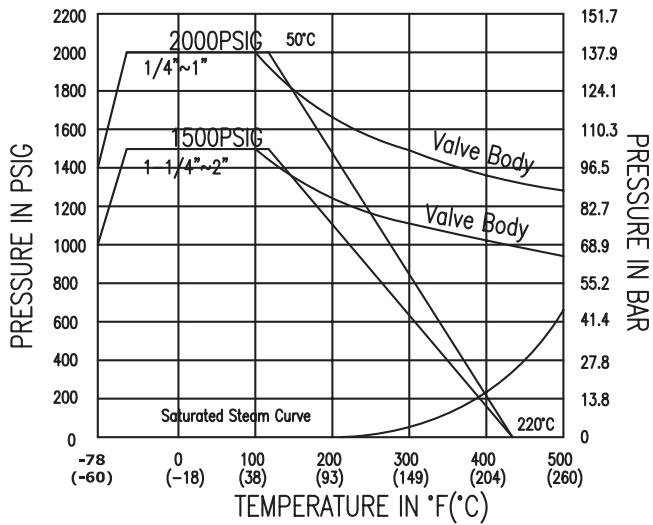


Fig. 1

