

Industrial 90°
turning worm gear
for valves with ISO top
and square stem

3D and XJ

Gear for butterfly valve

- Cast iron
- 200–4.000Nm
- Industrial 90 ° turning worm gear for butterfly valves or other valves with ISO top and square stem
- High quality in epoxy painted cast iron
- Industrial worm gear with high output ratio
- Cast iron body
- ISO5211 connection for direct mounting on the valve top
- Epoxy coating of 200µ



Make it better.

MODU[®]

3D and XJ

Gear for butterfly valve

Options on request

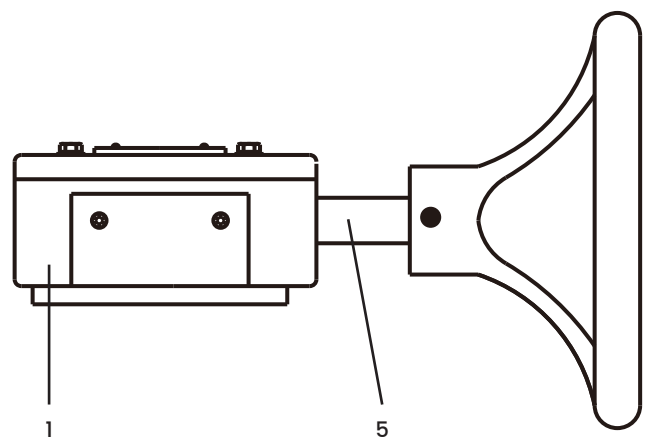
Dimension: >4.000Nm
 Material: Other steel materials / Stainless
 Surface: C3, C4, C5 Marine and others

Accessories

- Mechanical feedback
- Inductive feedback
- Padlock

Parts description, excerpt

Pos	Description	Material
1	Gear housing.....	Cast iron - epoxy
5	Drive shaft	Nickel plated steel



Developed for your industry



Additional specification can be requested.

Make it better.

MODU Valves A/S • moduvalves.com

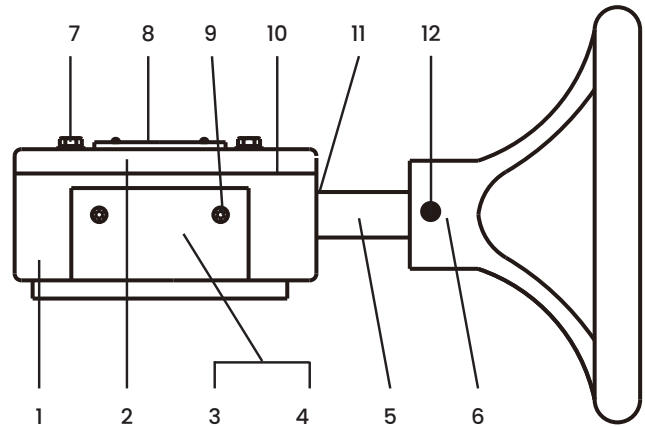
- **Improve the quality**
 We help Engineers to improve the quality of your manufacturing process.
- **Optimize total cost**
 We help Purchasing Officers to optimize total cost of production, prevent downtime and safeguard your brand.
- **Work smarter**
 We help Maintenance Crews to work smarter, while preventing time-consuming mistakes.

3D and XJ

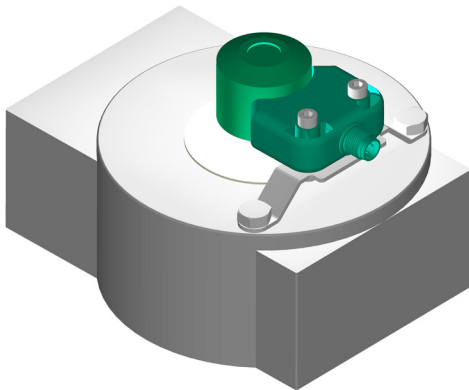
Gear for butterfly valve

Materials

Pos	Description	Material
1	Gear housing	Cast iron - epoxy coated
2	Top cover	Cast iron - epoxy coated
3	Worm shaft	Steel
4	Worm wheel	Ductile iron
5	Drive shaft	Nickel plated steel
6	Hand wheel	Cast iron - epoxy coated
7	Bolts	Stainless steel A2
8	Indicator	Aluminium
9	Adjustment bolts	Stainless steel A2
10	Gasket	NBR
11	Shaft sealing	NBR
12	Conical pin	Steel



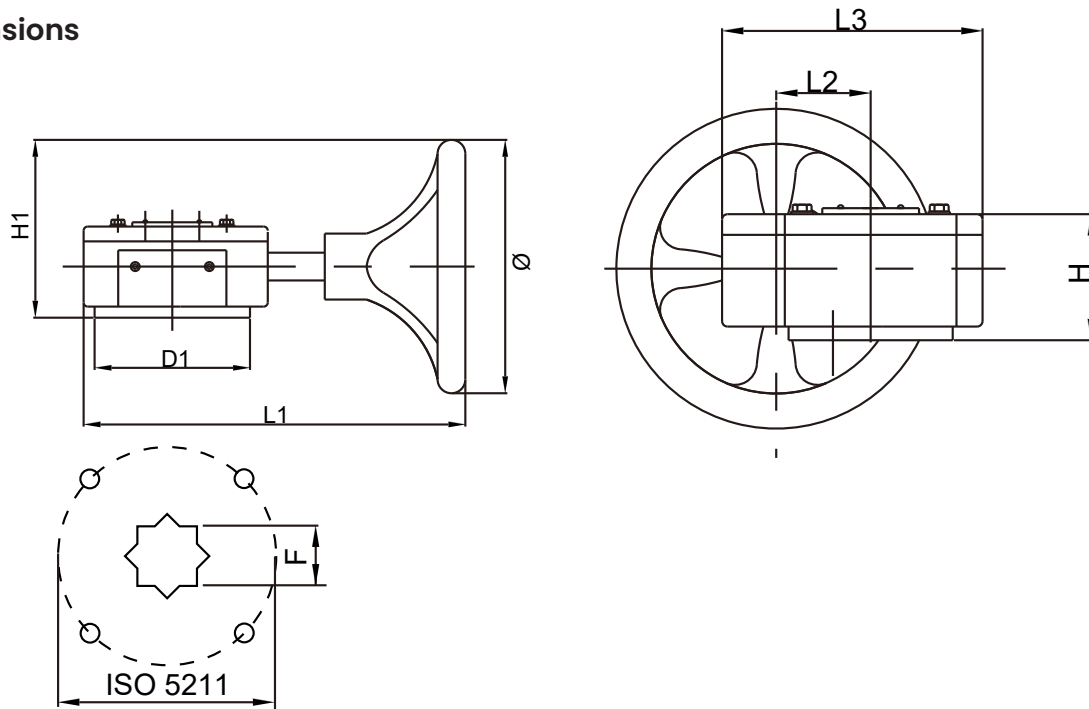
Example of inductive feedback mounted on manual gearbox.



3D and XJ

Gear for butterfly valve

Dimensions



Type	D1	Ø	H	H1	L1	L2	L3	F	ISO5211	Ratio	Torque Max [Nm]	Weight [kg]	MERKUR Butterfly
All dimensions in [mm]													
3D-15-11	108	145	65	113	212	45	129	11	F05/F07	24:1	200	4,2	DN40-80
3D-15-14	108	145	65	113	212	45	129	14	F05/F07	24:1	200	4,2	DN100-125
3D-50-17	146	285	70	182	305	62	171	17	F07	30:1	500	8,1	DN150-200
3D-50-22	146	285	70	182	305	62	171	22	F10	30:1	500	8,1	DN250
3D-120-22	165	285	77	182	300	85	198	22	F10	50:1	1200	10,6	-
3D-120-27	165	285	77	182	300	85	198	27	F12	50:1	1200	10,6	DN300-350
XJ-80-27	234	385	103	247	423	120	280	27	F12	80:1	2500	20,4	DN400
XK-80-36	234	385	103	247	423	120	280	36	F14	80:1	2500	20,3	DN450
XJ-300-F14	276	385	143	270	490	122	316	46	F14	293.5:1	4000	41,4	DN500
XJ-300-F16	276	385	143	270	490	122	316	46	F16	293.5:1	4000	41,3	DN600