

Merkur Gear

Gear for Merkur Wafer, Merkur Lug & Merkur Lug Marine



General

- Cast iron (worm gear)
- 200-4.000Nm
- Industrial 90 ° turning worm gear for butterfly valves or other valves with ISO top and square stem
- High quality in epoxy painted cast iron
- Industrial worm gear with high output ratio
- Cast iron body
- ISO5211 connection for direct mounting on the valve top
- Epoxy coating of 200µ

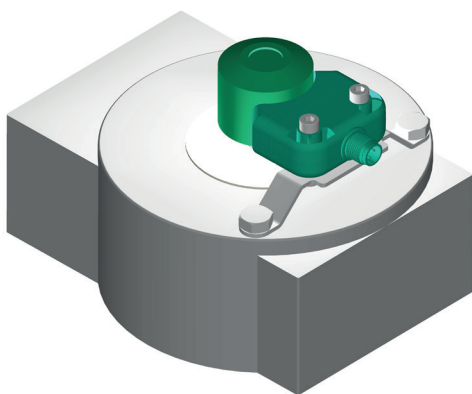
Options on request

Dimensions: >4.000Nm
 Material: Other steel materials / Stainless
 Surface: C3, C4, C5 Marine and others

Accessories

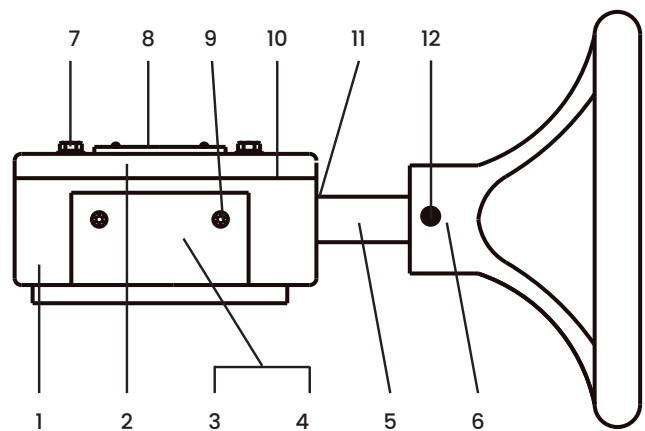
- Mechanical feedback
- Inductive feedback
- Padlock

Example of inductive feedback mounted on manual gearbox



Materials

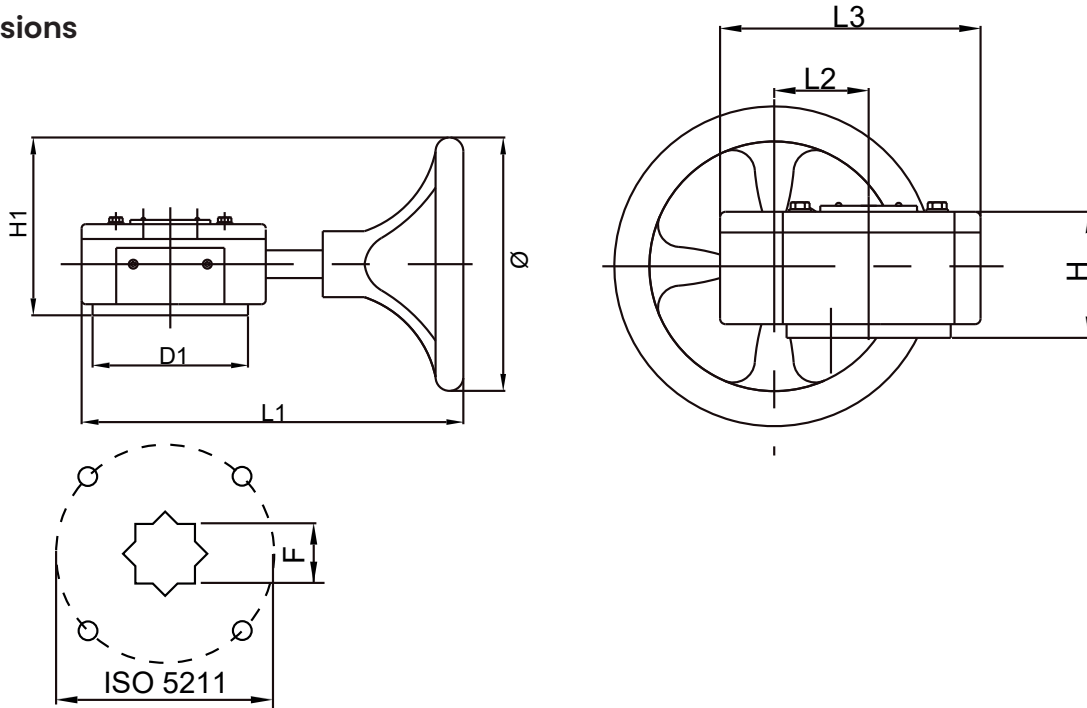
Pos	Description	Material
1	Gear housing	Cast iron - epoxy coated
2	Top cover	Cast iron - epoxy coated
3	Worm shaft	Steel
4	Worm wheel	Ductile iron
5	Drive shaft	Nickel plated steel
6	Hand wheel	Cast iron - epoxy coated
7	Bolts	Stainless steel A2
8	Indicator	Aluminium
9	Adjustment bolts	Stainless steel A2
10	Gasket	NBR
11	Shaft sealing	NBR
12	Conical pin	Steel



Merkur Gear

Gear for Merkur Wafer, Merkur Lug & Merkur Lug Marine

Dimensions



Type	D1	Ø	H	H1	L1	L2	L3	F	ISO5211	Ratio	Torque Max [Nm]	Weight [kg]	MERKUR Butterfly
All dimensions in [mm]													
52MEGEAR11-F05	108	145	65	113	212	45	129	11	F05	24:1	200	4,2	DN40-65
52MEGEAR11-F07	108	145	65	113	212	45	129	11	F07	24:1	200	4,2	DN80
52MEGEAR14-F05-F07	108	145	65	113	212	45	129	14	F05/F07	24:1	200	4,2	DN100-125
52MEGEAR17-F07-F10	146	285	70	182	305	62	171	17	F07/F10	30:1	500	8,1	DN150-200
52MEGEAR22-F10	146	285	70	182	305	62	171	22	F10	30:1	500	8,1	DN250
52MEGEAR27-F12	165	285	77	182	300	85	198	27	F12	50:1	1200	10,6	DN300
52MEGEAR27-F14	165	285	77	182	300	85	198	27	F14	50:1	1200	10,6	DN350-400
52MEGEAR36-F16	234	385	103	247	423	120	280	36	F16	80:1	2500	20,3	DN450
52MEGEAR46-F16	276	385	143	270	490	122	316	46	F16	293.5:1	4000	41,4	DN500-600