



**Compact  
actuator with  
built-in heater**

## HQ-004

Electric actuator 30Nm

- Multi voltage: 24VDC, 230VAC
- -20 to 70°C
- High quality industrial electric actuator
- Robust epoxy-painted aluminum
- ISO5211 connection
- IP67 enclosure
- Compact dimensions
- Good visual indicator
- Built-in heater
- Steel gear
- Handle for manual override



**Make it better.**

**MODU<sup>®</sup>**

# HQ-004

Electric actuator 30Nm • RINA, EAC, IP67, LVD2006/96/CE

## General

Torque: 30Nm  
 Voltage: 24VDC or 85..265VAC 50/60Hz (multi)  
 Connection: F03/F04/F05 (11x11mm square) (F04 45° offset)  
 Stop: Open/close by adjustable switches  
 Feed back: Open/close 2 x "NO" switches 5A  
 Visual indicator: Rotary arrow and 2 x LED (open/close)  
 Duty time: S2 30 min.  
 Run time 0-90°: 7 sec  
 Consumption: 24VDC/230VAC - 0,5A/0,1A

## Construction HQ-004



## Application

90° rotary valves, such as smaller butterfly valves, ball valves, dampers, etc.

## Connection/ cable

Cable length: 1200mm

## Developed for your industry



Additional specification can be requested.

## Make it better.

MODU Valves A/S • moduvalves.com

### ➤ Improve the quality

We help Engineers to improve the quality of your manufacturing process.

### ➤ Optimize total cost

We help Purchasing Officers to optimize total cost of production, prevent downtime and safeguard your brand.

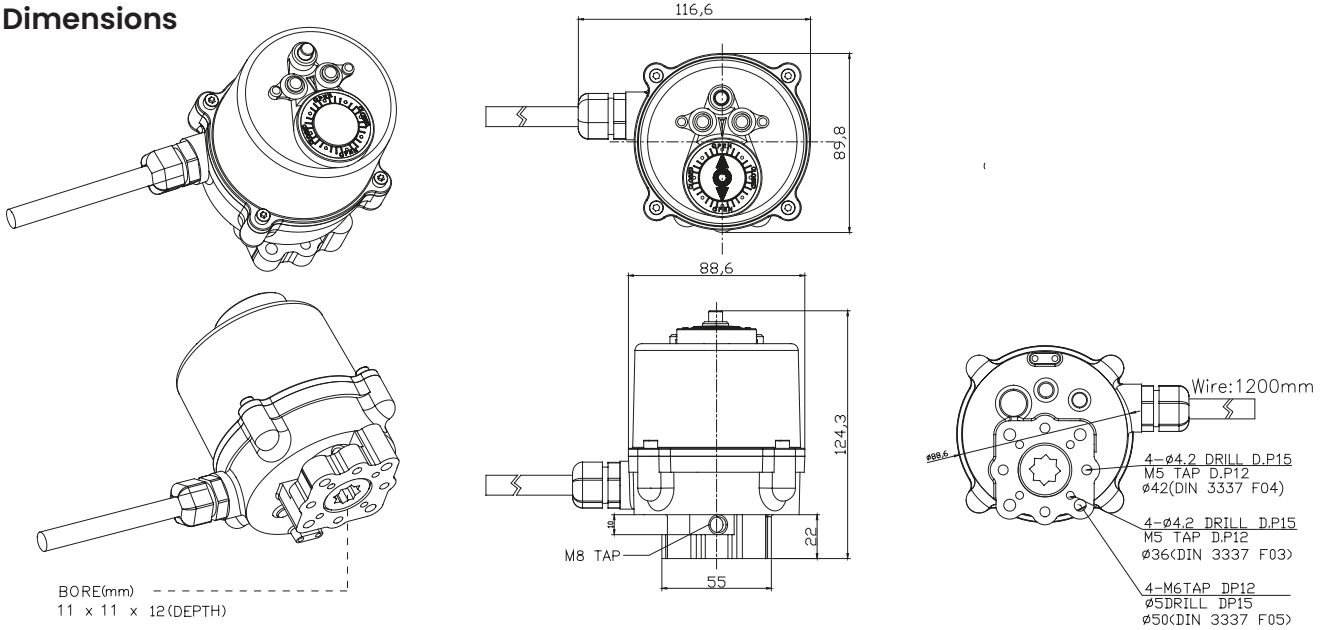
### ➤ Work smarter

We help Maintenance Crews to work smarter, while preventing time-consuming mistakes.

# HQ-004

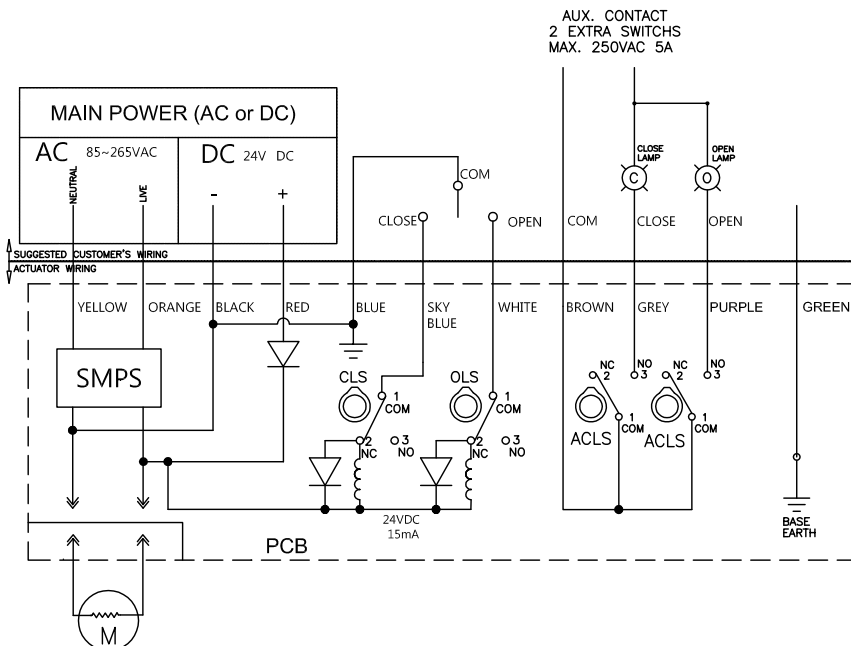
Electric actuator 30Nm • RINA, EAC, IP67, LVD2006/96/CE

## Dimensions



| Model  | Moment | Open / close time(sec.)<br>24VDC and 230VAC | Consumption [A]<br>230VAC - 24VDC | Duty range | Switches                | ISO5211                             | Weight [Kg] |
|--------|--------|---|-----------------------------------|------------|-------------------------|-------------------------------------|-------------|
| HQ-004 | 30Nm   | 7   | 0.1    0.5                        | S4 (70%)   | 2 x SPDT<br>250V Max 5A | F03 / 90°<br>F04 / 45°<br>F05 / 90° | 1.2         |

## Wire diagram 3-point control



Make it better.

MODU Valves A/S • moduvalves.com