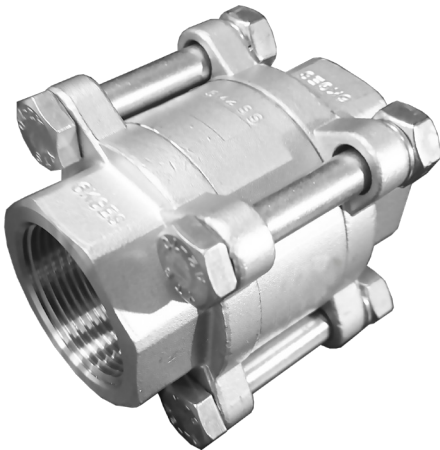


3-pcs.  
design

# SLCW

3-pcs spring loaded check valve PN69

- Stainless steel "CF8M"
- Metal seat
- Industrial 3-piece check valve
- Low opening pressure
- Spring loaded disc for mounting in all directions
- Thread or weld connection
- Temperature range from -20°C to 220°C



Make it better.



# SLCW

3-pcs spring loaded check valve PN69 • ATEX, FDA, PED

## Connection

Butt weld EN12627 or thread BSPP.

## Application

Water, gas, steam, oil ect.

## Options on request

Dimension: 2-1/2" to 4" PN55  
 Connection: NPT thread, BSPT thread, socket weld  
 Material: WCB

## Pressure rating

1/4" to 2" (FB): 69bar / 1000psi

## Temperature

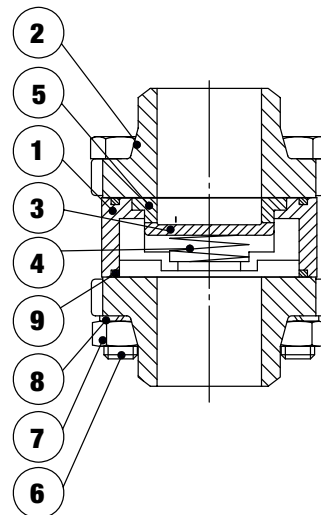
-20°C to 190°C

## Spare parts

- Body gasket

## Material description

Pos	Description .....	Material
1	Body.....	Stainless steel CF8M
2	End connections thread/weld.....	Stainless steel CF8M/CF3M
3	Disc.....	Stainless steel AISI316
4	Spring.....	Stainless steel AISI316
5	Seat.....	Stainless steel AISI316
6	Bolt.....	Stainless steel AISI304
7	Nut.....	Stainless steel AISI304
8	Locking washer.....	Stainless steel AISI304
9	Body gasket.....	PTFE



## Developed for your industry



Additional specification can be requested.

## Make it better.

MODU Valves A/S • moduvalves.com

### ➤ Improve the quality

We help Engineers to improve the quality of your manufacturing process.

### ➤ Optimize total cost

We help Purchasing Officers to optimize total cost of production, prevent downtime and safeguard your brand.

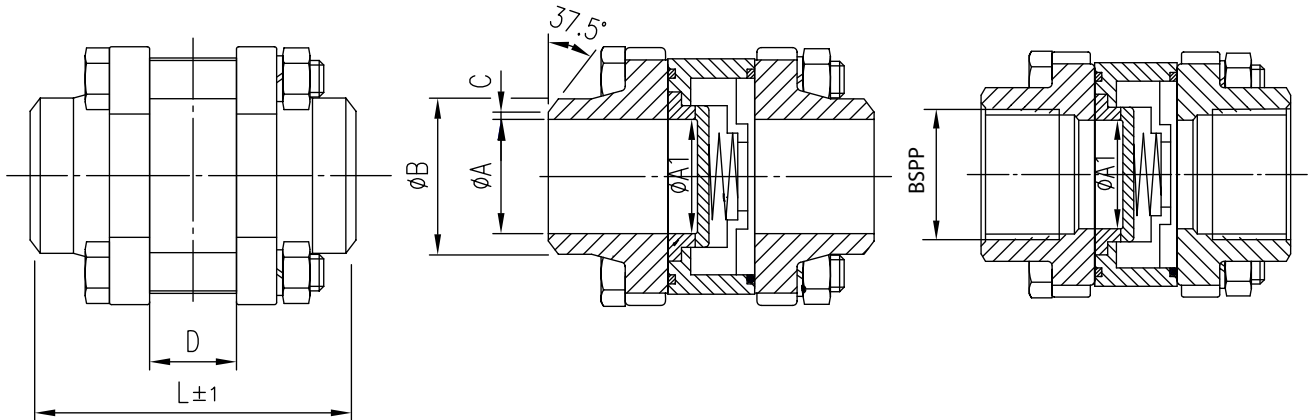
### ➤ Work smarter

We help Maintenance Crews to work smarter, while preventing time-consuming mistakes.

# SLCW

3-pcs spring loaded check valve PN69 • ATEX, FDA, PED

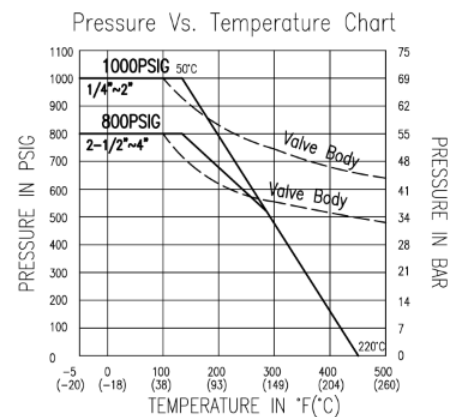
## Dimension



DIM	øA [mm]	øA1 [mm]	øB [mm]	C [mm]	D [mm]	L [mm] Butt weld	L [mm] Thread
DN08	11.6	15	16.2	1.6	16.0	54.1	54.1
DN10	12.7	15	17.5	1.6	16.0	54.1	54.1
DN15	15.0	15	22.7	1.6	16.0	58.1	58.1
DN20	20.0	20	27.5	1.6	19.0	67.2	67.2
DN25	25.0	25	34.0	1.6	22.0	74.3	74.3
DN32	32.0	32	42.7	1.6	28.0	88.3	88.3
DN40	38.0	38	48.6	1.6	31.5	97.7	97.7
DN50	50.0	50	60.5	1.6	40.0	106.8	106.8

DIM	Minimum opening pressure [mbar]	Minimum opening pressure [mbar]			Weight [kg]	Kv-value [m3/h]
		↑	↓	→		
DN08	1/4" BSPP	25	20	23	0,4	1,5
DN10	3/8" BSPP	25	20	23	0,4	1,6
DN15	1/2" BSPP	25	20	23	0,4	4,8
DN20	3/4" BSPP	25	20	23	0,5	10,7
DN25	1" BSPP	25	20	23	0,7	20,7
DN32	1-1/4" BSPP	27	20	23	1,2	32,9
DN40	1-1/2" BSPP	28	20	24	1,7	49,0
DN50	2" BSPP	39	20	25	2,5	88,4

## Temperature vs. pressure illustration



Make it better.

MODU Valves A/S • moduvalves.com