



Direct mount  
of actuators

# MODU 39M

3-way ball valve PN63

- Stainless steel "CF8M"
- "L" or "T" port
- Industrial 3-way ball valve in very high quality
- Threaded connection
- Patented MODU seal system that ensures long and trouble-free operation
- Glass-reinforced seats with high temperature and wear resistance
- ISO5211 connection for direct actuator assembly
- Made of food-grade materials
- ISO 14001 certification



Make it better.

**MODU**<sup>®</sup>

# MODU 39M

3-way ball valve PN63 • EU-1935, FDA, PED, ATEX, TA-LUFT

## Connection

Threaded BSPP.

## Usable for

Water, air, oil ect.

## Options

Design: Full bore 1/2" to 2"

Connection: Threaded NPT

## Pressure rating

1/4" to 2" (FB): 63bar / 1000psi

## Temperature

-20° C to 180° C

## Accessories

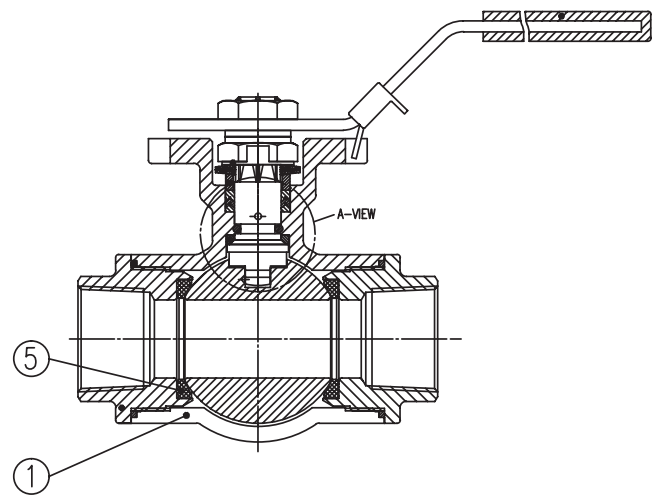
- Closed stem extension, TA-Luft approved stuffing box "TSM"
- Closed stem extension, without stuffing box

## Parts description, excerpt

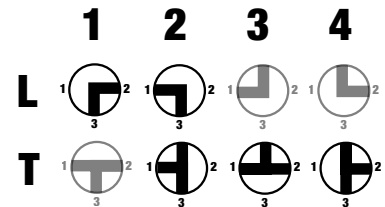
Pos Description ..... Material

1 Valve body ..... Stainless steel CF8M

5 Seat ..... RPTFE (15%Glass 85%PTFE)



## Flow pattern



## Developed for your industry



Additional specification can be requested.

## Make it better.

MODU Valves A/S • moduvalves.com

### ➤ Improve the quality

We help Engineers to improve the quality of your manufacturing process.

### ➤ Optimize total cost

We help Purchasing Officers to optimize total cost of production, prevent downtime and safeguard your brand.

### ➤ Work smarter

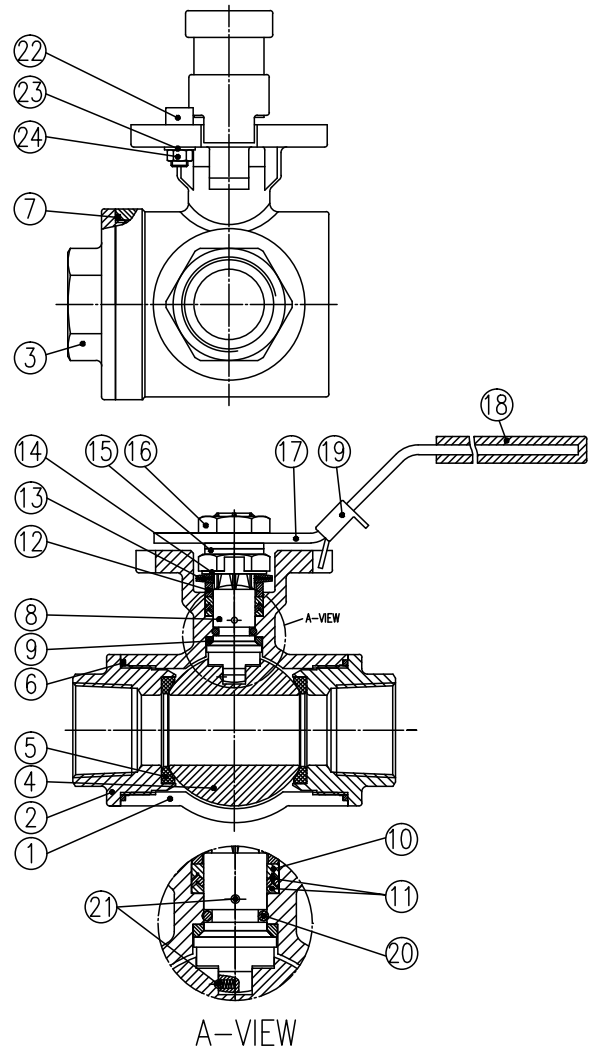
We help Maintenance Crews to work smarter, while preventing time-consuming mistakes.

# MODU 39M

3-way ball valve PN63 • EU-1935, FDA, PED, ATEX, TA-LUFT

## Materials

Pos	Description .....	Material
1	Valve body .....	Stainless steel CF8M
2	Threaded connection ...	Stainless steel CF8M
3	Threaded connection ...	Stainless steel CF8M
4	Ball .....	Stainless steel CF8M/AISI316
5	Seat .....	RPTFE (15%Glass 85%PTFE)
6	Body gasket - straight .	PTFE
7	Body gasket - angle.....	PTFE
8	Stem.....	Stainless steel AISI316
9	Stem gasket.....	RPTFE (15%Glass 85%PTFE)
10	Stem seal upper.....	RPTFE (15%Glass 85%PTFE)
11	Stem seal lower .....	PTFE
12	Bushing.....	Stainless steel AISI304
13	Spring washer.....	Stainless steel AISI301
14	Locking saddle .....	Stainless steel AISI304
15	Shim.....	Stainless steel AISI304
16	Stem nut .....	Stainless steel AISI304
17	Handle.....	Stainless steel AISI304
18	Sleeve .....	Vinyl
19	Locking plate .....	Stainless steel AISI304
20	O-ring .....	FKM
21	Antistatic device.....	Stainless steel AISI316
22	Stop bolt.....	Stainless steel AISI304
23	Shim.....	Stainless steel AISI304
24	Nut.....	Stainless steel AISI304



DIM Thread	*) Torque [Nm]		Weight [Kg]	Kv-value [m <sup>3</sup> /t] L-port	Kv-value [m <sup>3</sup> /t] T-port straight	Kv-value [m <sup>3</sup> /t] T-port elbow
	Without pressure	Max pressure				
1/4"FB	6,3	7,7	0,6	6	7	5
3/8" FB	6,3	7,7	0,6	6	7	5
1/2" RB	6,3	7,7	0,6	6	7	5
3/4" RB	8,4	9,5	0,9	9	11	7
1" RB	11,9	15,4	1,4	17	22	15
1 1/4" RB	25,2	35,7	2,1	26	29	19
1 1/2" RB	29,4	46,9	3,2	40	46	35
2" RB	35,7	60,2	5,1	60	72	46

\*) Torques are listed without safety factor at 20°C. See section for actuator sizing in the following pages.

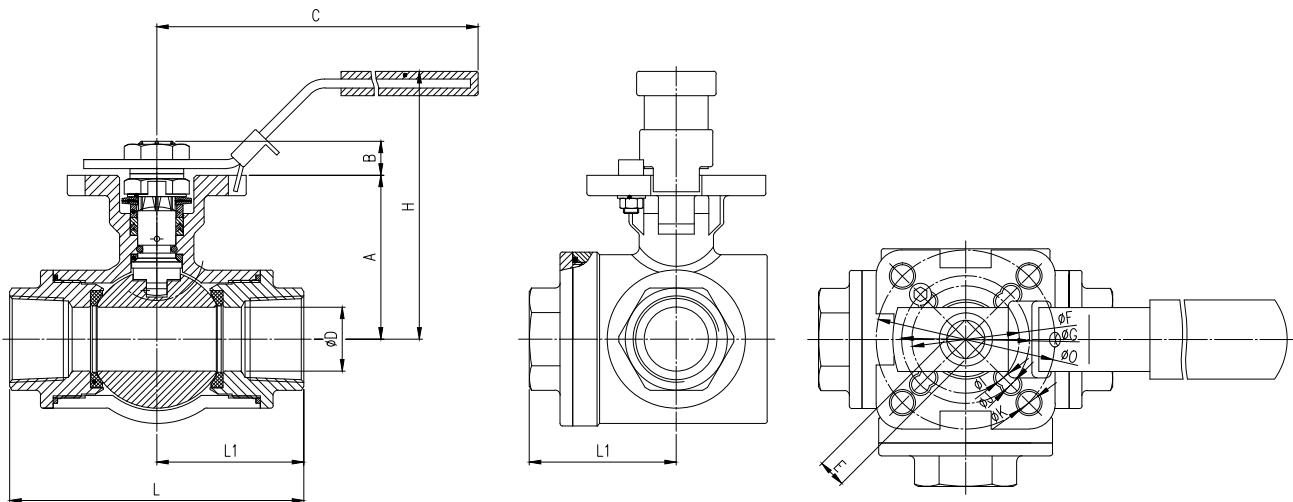
**Make it better.**

MODU Valves A/S • moduvalves.com

# MODU 39M

3-way ball valve PN63 • EU-1935, FDA, PED, ATEX, TA-LUFT

## Dimension



DIM	A [mm]	B [mm]	C [mm]	ØD [mm]	E [mm]	ØF [mm]	ØG [mm]	ØH [mm]	H [mm]	ØI [mm]	ØJ [mm]	ØK [mm]	L [mm]	L1 [mm]	ISO5211
1/4" FB	38.1	9.0	140	11.0	9	36	42	-	75	6.0	6.0	-	72.0	36.0	F03/F04
3/8" FB	38.1	9.0	140	12.5	9	36	42	-	75	6.0	6.0	-	72.0	36.0	F03/F04
1/2" RB	38.1	9.0	140	12.5	9	36	42	-	75	6.0	6.0	-	72.0	36.0	F03/F04
3/4" RB	43.9	9.0	151	15.0	9	36	42	50	88	6.5	7.0	-	83.0	41.5	F03/F04/F05
1" RB	54.2	10.5	166	20.0	11	42	50	-	93	6.0	7.0	-	110.0	55.0	F04/F05
1-1/4" RB	64.1	10.5	183	25.0	11	42	50	70	109	6.5	7.0	9	125.0	62.5	F04/F05/F07
1-1/2" RB	78.5	13.5	216	32.0	14	50	70	-	128	7.5	9.0	-	125.0	62.5	F05/F07
2" RB	94.9	18.5	263	38.0	17	70	102	-	154	10	12.0	-	149.0	74.5	F05/F07

**Make it better.**

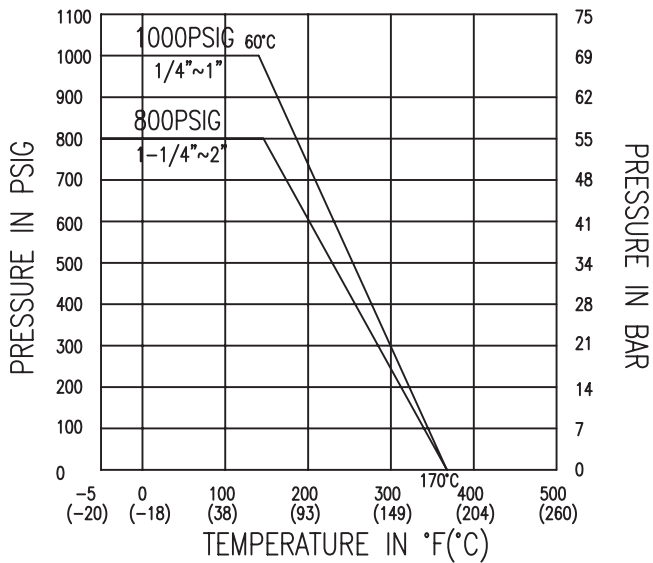
MODU Valves A/S • moduvalves.com

# MODU 39M

3-way ball valve PN63 • EU-1935, FDA, PED, ATEX, TA-LUFT

## Temperature vs. pressure table for RTFE seats

Valid for fluids and gasses. For steam and similar services contact MODU Valves A/S.



## Actuator sizing

Media factor	Multiply by
Clean, particle free, lubricating (oil, hydraulic fluids etc.)	1.00
Clean, particle free, non-lubricating (water, alcohol etc.)	1.20
Moist gas or saturated steam	1.20
Dry gas or superheated steam	1.40
Gas, dirty unfiltered i.e. Natural gas	1.50
Particle filled, corrosive, solvents and polluted systems	2.00 #

Service factor	Multiply by
Simple on / off manoeuvring	1.00
Regulating / Throttling	1.20
Manoeuvre once per week	1.20
Manoeuvre every second week or critical component	1.50

For actuator dimensioning:

Torque x Media factor x Service factor

# Polluted systems will reduce the expected life span of the seat rings