



Ensures long
and trouble-free
operation

TSM

Closed stem extension with stem seal

- Stainless steel "CF8M"
- For serie 83 og 88, 3-pcs ball valve
- Industrial stem extension with integrated packing system
- Patented packing system that ensures long and trouble-free operation
- Possibility of direct actuator assembly via ISO5211 connection
- The TSM unit is TA-Luft approved



Make it better.

MODU[®]

TSM

Closed stem extension with stem seal • FDA, TA-LUFT, PED

Connection

Fits directly onto the ISO-top of the valve. Additionally the TSM-units are mountable on other series of Mars ball valves with similar ISO-tops.

Usable for

Where you want a closed stem extension or extra secondary stem seal mounted on ball valve. Delivered with handles and bolts.

Dimensions

Serie 83: DN08–DN50FB (DN65RB)
 Serie 88: DN08–DN100FB

Accessories

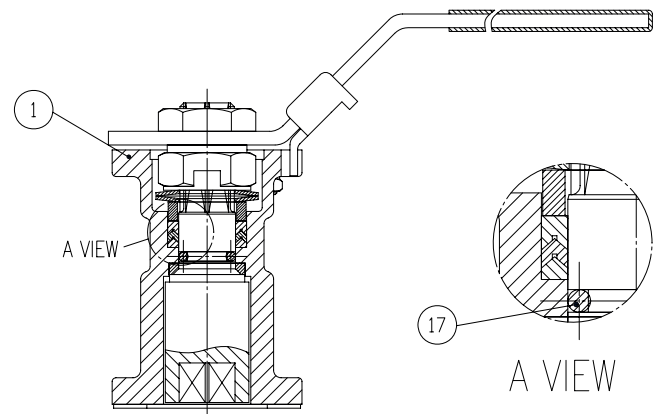
- Position lever, lockable for ball valves with V-port ball
- Feedback (Inductive or Mechanical)

Spare parts

- Complete sealing kit
- TSM gasket

Parts description, excerpt

| Pos | Description | Material |
|-----|-------------------|----------------------|
| 1 | Body | Stainless steel CF8M |
| 17 | O-ring | FPM |



Developed for your industry



Additional specification can be requested.

Make it better.

MODU Valves A/S • moduvalves.com

➤ Improve the quality

We help Engineers to improve the quality of your manufacturing process.

➤ Optimize total cost

We help Purchasing Officers to optimize total cost of production, prevent downtime and safeguard your brand.

➤ Work smarter

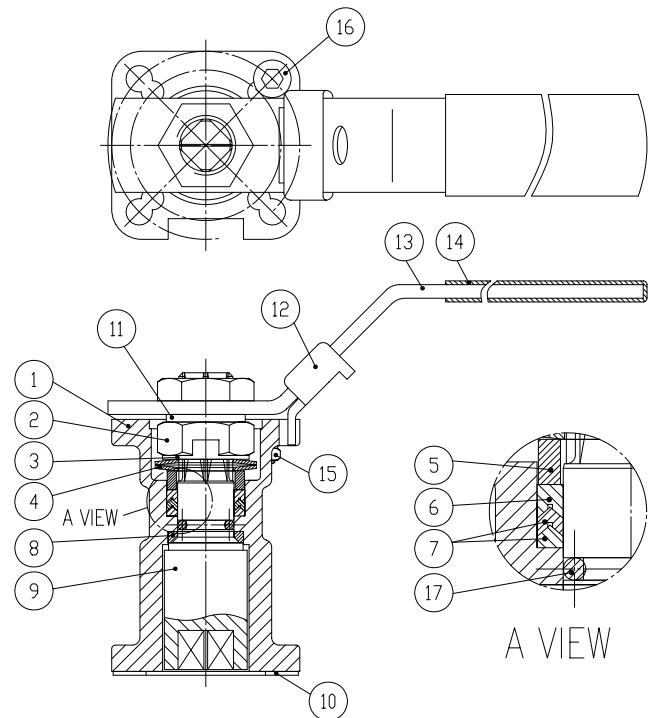
We help Maintenance Crews to work smarter, while preventing time-consuming mistakes.

TSM

Closed stem extension with stem seal • FDA, TA-LUFT, PED

Materials

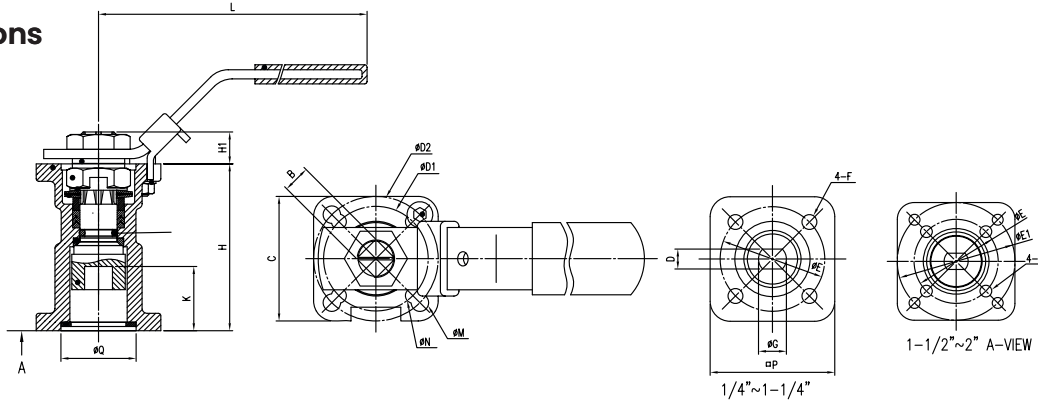
| Pos | Description | Material |
|-----|----------------|--------------------------|
| 1 | Body | Stainless steel CF8M |
| 2 | Stem nut | Stainless steel AISI304 |
| 3 | Locking saddle | Stainless steel AISI304 |
| 4 | Spring washer | Stainless steel AISI301 |
| 5 | Bushing | Stainless steel AISI304 |
| 6 | Stem seal | RTFE (25% Glass 75%PTFE) |
| 7 | V-shaped seal | PTFE |
| 8 | Stem packing | RTFE (25% Glas 75%PTFE) |
| 9 | Stem | Stainless steel AISI316 |
| 10 | TSM gasket | PTFE |
| 11 | Washer | Stainless steel AISI304 |
| 12 | Locking device | Stainless steel AISI304 |
| 13 | Handle | Stainless steel AISI304 |
| 14 | Sleeve | Vinyl |
| 15 | Nut | Stainless steel AISI304 |
| 16 | Handle stop | Stainless steel AISI304 |
| 17 | O-ring | FPM |



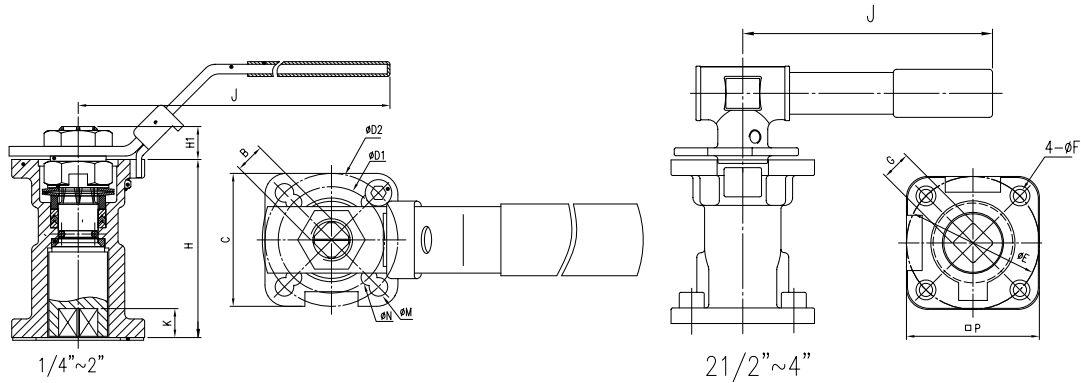
TSM

Closed stem extension with stem seal • FDA, TA-LUFT, PED

Dimensions



| Series 83 | B | C | D | ØD1 | ØD2 | ØE | ØE1 | F | G | H | HI | K | L | ØM | ØN | P | Q | ISO5211 | [Nm] |
|-----------------|----|----|-----|-----|-----|----|-----|-----|------|------|------|------|-----|----|----|----|------|---------|------|
| DN08-10F DN15RB | 9 | 42 | 6.5 | 36 | 42 | 36 | - | 6.5 | 9.5 | 62.7 | 9.0 | 8.5 | 139 | 6 | 6 | 42 | 25.2 | F03/F04 | 3,6 |
| DN15F DN20RB | 9 | 42 | 6.5 | 36 | 42 | 36 | - | 6.5 | 9.5 | 62.7 | 9.0 | 19.5 | 139 | 6 | 6 | 42 | 25.2 | F03/F04 | 3,6 |
| DN20F DN25RB | 9 | 42 | 6.5 | 36 | 42 | 36 | - | 6.5 | 9.5 | 62.7 | 9.0 | 19.5 | 139 | 6 | 6 | 42 | 25.2 | F03/F04 | 3,6 |
| DN25F DN32RB | 11 | 50 | 8.0 | 42 | 50 | 42 | - | 6.5 | 11.2 | 67.0 | 10.9 | 25.8 | 165 | 7 | 6 | 50 | 30.2 | F04/F05 | 6,0 |
| DN32F DN40RB | 11 | 50 | 8.0 | 42 | 50 | 42 | - | 6.5 | 11.2 | 67.0 | 10.9 | 25.8 | 165 | 7 | 6 | 50 | 30.2 | F04-F05 | 6,0 |
| DN40F DN50RB | 14 | 70 | 9.7 | 50 | 70 | 50 | 70 | 7.5 | 14.3 | 86.0 | 13.9 | 32.3 | 215 | 9 | 7 | 70 | 39.2 | F05/F07 | 9,6 |
| DN50F DN65RB | 14 | 70 | 9.7 | 50 | 70 | 50 | 70 | 7.5 | 14.3 | 86.0 | 13.9 | 26.8 | 215 | 9 | 7 | 70 | 39.2 | F05/F07 | 9,6 |



| Series 88 | B | C | ØD1 | ØD2 | ØE | ØF | G | H | HI | J | K | ØM | ØN | P | ISO5211 | [Nm] |
|-----------------|----|----|-----|-----|-----|----|----|-------|------|-----|------|----|------|----|---------|------|
| DN08-10F DN15RB | 9 | 42 | 36 | 42 | 42 | 6 | 9 | 60.7 | 9.0 | 139 | 9.2 | 6 | 6.0 | 42 | F03/F04 | 3,6 |
| DN15F DN20RB | 9 | 42 | 36 | 42 | 42 | 6 | 9 | 60.7 | 9.0 | 139 | 9.2 | 6 | 6.0 | 42 | F03/F04 | 3,6 |
| DN20F DN25RB | 9 | 42 | 36 | 42 | 42 | 6 | 9 | 60.7 | 9.0 | 139 | 9.2 | 6 | 6.0 | 42 | F03/F04 | 3,6 |
| DN25F DN32RB | 11 | 50 | 42 | 50 | 50 | 7 | 11 | 67.0 | 10.9 | 165 | 12.2 | 7 | 6.0 | 50 | F04/F05 | 6,0 |
| DN32F DN38RB | 11 | 50 | 42 | 50 | 50 | 7 | 11 | 67.0 | 10.9 | 165 | 12.2 | 7 | 6.0 | 50 | F04-F05 | 6,0 |
| DN40F DN50RB | 14 | 70 | 50 | 70 | 70 | 9 | 14 | 86.0 | 13.9 | 215 | 16.2 | 9 | 7.5 | 70 | F05/F07 | 9,6 |
| DN50F DN65RB | 14 | 70 | 50 | 70 | 70 | 9 | 14 | 86.0 | 13.9 | 215 | 16.2 | 9 | 7.5 | 70 | F05/F07 | 9,6 |
| DN65F DN80RB | 17 | 92 | 70 | 102 | 102 | 12 | 17 | 105.0 | 16.8 | 300 | 19.2 | 12 | 10.0 | 92 | F07/F10 | 15,6 |
| DN80F DN100RB | 17 | 92 | 70 | 102 | 102 | 12 | 17 | 105.0 | 16.8 | 370 | 19.2 | 12 | 10.0 | 92 | F07/F10 | 15,6 |
| DN100F - | 17 | 92 | 70 | 102 | 102 | 12 | 17 | 105.0 | 16.8 | 370 | 19.2 | 12 | 10.0 | 92 | F07/F10 | 15,6 |

Make it better.

MODU Valves A/S • moduvalves.com

*Not a stock item - available on request (i.e. use a series 83 ball valve with CSX)